



Pi Tau Sigma Tau Alpha Chapter Johns Hopkins University



PURPOSE

The Tau Alpha Chapter of the Pi Tau Sigma honors fraternity at Johns Hopkins University recognizes Mechanical Engineering and Engineering Mechanics juniors and seniors who demonstrate high academic and service achievement. Members of the chapter are expected to participate in service activities that benefit their fellow students, the Department of Mechanical Engineering, and Johns Hopkins University as a whole.

CONTACT INFORMATION

Website - <http://www.pitausigma.net/>

Facebook - <https://www.facebook.com/PiTauSigma>

PTS Board of Directors – e-mail addresses are at the bottom of the Pi Tau Sigma webpages

Tau Alpha Chapter

- Faculty Advisor – Prof. Noah Cowan – ncowan@jhu.edu or 410-516-5301
- Academic Program Manager – Mike Bernard – mike.bernard@jhu.edu or 410-516-7154
- National Office – Dr. Alex Moutsoglou – alex.moutsoglou@sdstate.edu

MEMBERSHIP

The Fraternity requires that members rank in the top 35% scholastically and that fitness for membership is demonstrated through a variety of qualities, such as soundness of character, principles, morals, honesty, neatness, and social adaptability. Additional information is available in “The Story of Pi Tau Sigma.”

In the Department of Mechanical Engineering, students can be selected for membership twice a year, in the middle of the fall semester and the middle of the spring semester. The department follows the scholastic selection criteria of the national organization:

Consideration	Seniors		Juniors	
	Primary	Secondary	Primary	Secondary
Fall	33%	35%	17%	25%
Spring	33%	35%	25%	33%

Table 1 – Scholastic Rank Requirements for Membership Consideration

Current members will consider each student in the “Primary” ranks first to determine fitness for membership based on both scholastic and character attributes. Candidates from this group may be selected or rejected for membership. If anyone in the “Primary” ranks are rejected for membership, then students in the “Secondary” rank can be considered. Rejection of a “Primary” candidate should be carefully justified; for example, if the student has been convicted of academic misconduct. Once candidates for membership are selected, the officers notify those students to invite them to join the fraternity.



Pi Tau Sigma Tau Alpha Chapter Johns Hopkins University



INVITATION

Eligible students are usually invited by e-mail. Here is a sample welcome e-mail:

Dear Candidates,

This note is being blind copied to a number of students.

Congratulations! On behalf of the Tau Alpha chapter of Pi Tau Sigma, it is my great pleasure that I welcome you to join our chapter of this international mechanical engineering honor society. Pi Tau Sigma members exemplify sound engineering ability, scholarship, personality, and probable future success in their chosen field of mechanical engineering. We believe that your scholastic and character attributes have merited your acceptance into Pi Tau Sigma.

All of us in Pi Tau Sigma are looking forward to meet you. **Please reply with your decision regarding joining Pi Tau Sigma by (submit date here).** A date will be set soon for the induction ceremony.

Your fellow mechanical engineers of the Tau Alpha chapter of Pi Tau Sigma congratulate you on your achievement, and look forward to meeting you at the induction.

Best Wishes,
All of us at Pi Tau Sigma

Students will reply to the e-mail and the person responsible for collecting the responses will compile a list of those accepting the invitation and send it to the department's Academic Program Coordinator, who will arrange with those students to receive a Pi Tau Sigma certificate and membership card.

INDUCTION CEREMONY

At the ceremony, the president, vice president, and secretary will read from the Ritual telling the story of Pi Tau Sigma and inductee responsibilities, as well as lead the pledge of inductees.

Per the Pi Tau Sigma national office, "the chapter is responsible for maintaining an 'Initiation Roll Book,' which will be part of the initiation ceremony. The chapter name, date of initiation, and names of the officers conducting the ceremony will be recorded.

"At the end of the ceremony, each initiate present, will then print her/his name and sign next to it. An electronic copy of the recorded page will need to be submitted along with the Certificate Order excel file for processing the initiation. An initiation will not be processed without the page copy from the Initiation Roll Book.

"Please remember that all students and honorary members need to attend the induction ceremony, and that the inductees are not Pi Tau Sigma members until the registration of the initiation is processed by



Pi Tau Sigma Tau Alpha Chapter Johns Hopkins University



the national office.”

The “Initiation Roll Book” will be signed by the officers and all initiates and current members at each initiation ceremony.

OFFICER DUTIES

PRESIDENT

- Ensure that the three conditions for active [Chapter Status](#) are met, including holding two inductions, submitting an annual report, and attendance at the national convention.
- Preside over the two induction meetings held each year.
- Fulfill the duties of the Vice President and/or Secretary upon his or her delegation of duties or in his or her absence.
- Organize service and social activities as the Tau Alpha chapter sees fit, including delegating duties to ensure success of the events. It is suggested that officers seek information on activities held by [other chapters](#) for inspiration.
- Hold a transition meeting with the Chapter faculty advisor or designated staff at the end of the year for the incoming officers.
- Work with the advisors and officers to create an annual budget.
- Report actions periodically to the faculty advisor(s).

VICE PRESIDENT

- Fulfill the duties of the President and/or Secretary upon his or her delegation of duties or in his or her absence.
- Help conduct the two induction meetings held each year.

SECRETARY

- Fulfill the duties of the President and/or Vice President upon his or her delegation of duties or in his or her absence.
- Help conduct the two induction meetings held each year, including taking minutes.

RESOURCES

- Rituals of Pi Tau Sigma:
<http://www.pitausigma.net/ChapterBusiness/ChapterGuide/upload/RITUALS-OF-PI-TAU-SIGMA.pdf>
- Chapter Manual: <http://www.pitausigma.net/ChapterBusiness/ChapterGuide/upload/The-Pi-Tau-Sigma-Manual.pdf>
- Constitution: <http://www.pitausigma.net/ChapterBusiness/ChapterGuide/upload/Constitution-of-Pi-Tau-Sigma-Amend-2013.pdf>



Pi Tau Sigma Tau Alpha Chapter Johns Hopkins University



CALENDAR

Note that the calendar begins at the end of the academic year as the new officer duties begin then.

Action	Suggested Action Start Date	Firm Deadline / Activity Date
Officer Transition – outgoing officers and advisors meet to explain duties and actions to incoming officers, create budget for next year.	April 30	May 15
Activity Plan for Next Year <ul style="list-style-type: none"> • Past activities included Advising Week Pizza Party and Undergraduate BarBQ. • Suggested activities could include participation as a fraternity in the President’s Day of Service or other service activity. • Other activities can be chosen based on officer and member availability and willingness. • Update the Activities Calendar with new or updated activities 	May 15	May 31
Write and send Annual Report to national office	May 15	June 30
Request Candidate List for Fall induction from the MechE department	July 1	September 1
Select candidates for Fall induction	September 15	October 1
Invite selected candidates for Fall induction – invitation, acceptance of invitation, request card and certificate orders	October 2	October 15
Plan Fall induction – select date, reserve room, plan dinner	October 15	October 30
Advising Week – pizza party and advising sessions (held in the past, can be held again)	October 10	Late-October or early-November
Conduct Fall induction	Early November	Early November
Plan for Convention attendance in February or early-March	Early November	January
Request Candidate List for Spring induction from the MechE department	January 1	February 1
Select candidates for Spring induction	February 15	March 1
Invite selected candidates for Fall induction – invitation, acceptance of invitation, request card and certificate orders	March 2	March 15

See next page for more of the calendar...



Pi Tau Sigma Tau Alpha Chapter Johns Hopkins University

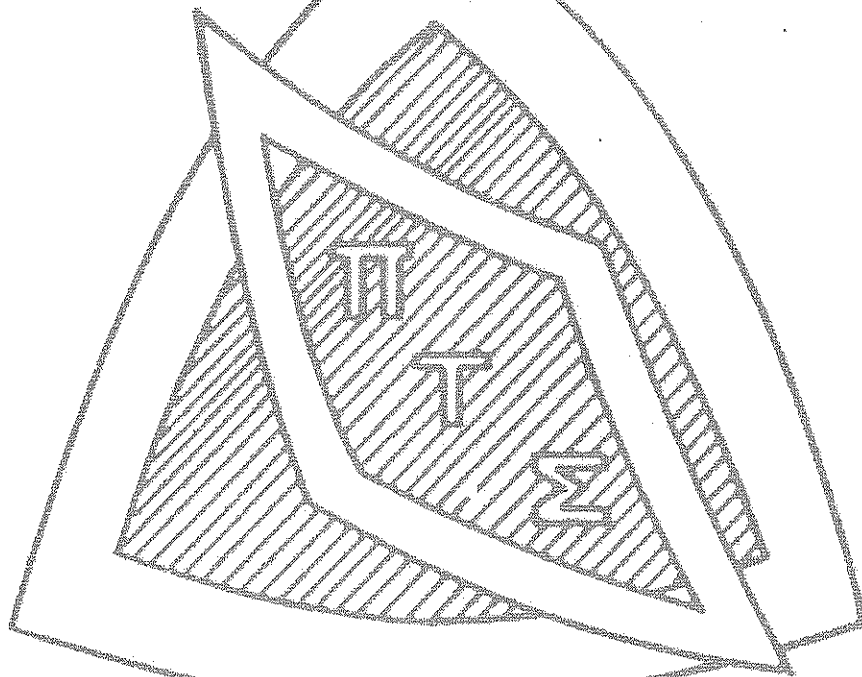


CALENDAR (continued)

Action	Suggested Action Start Date	Firm Deadline / Activity Date
Renew Tax Exempt Status - file Form 990-N. Visit for information: <ul style="list-style-type: none"> Pit Tau Sigma's site http://www.pitaisigma.net/sites/default/files/2016-09/TAX-EXEMPT-STATUS-2015.pdf IRS site https://www.irs.gov/charities-non-profits/annual-electronic-filing-requirement-for-small-exempt-organizations-form-990-n-e-postcard The LogIn is PiTauSigmaTauAlpha. The password is automatically stored in the 	March 2	March 15
Have cords and stoles ordered for graduating seniors	March 2	April 2
Plan and host Undergraduate BarBQ with MUSC and ASME	Early March	Mid- to late-April
Plan Spring induction – select date, reserve room, plan dinner	March 15	March 30
Advising Week – pizza party and advising sessions (held in the past, can be held again)	March 15	Late-March or early-April
Conduct Spring induction	Early April	Early April

Table 2 – Activities Calendar

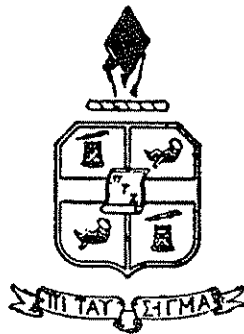
The Story
of
Pi Tau Sigma



*National Honorary
Mechanical Engineering
Fraternity*

1915 - 1994

THE STORY OF
PI TAU SIGMA



National
Honorary Mechanical Engineering
Fraternity

Founded 1915

Member
Association of College Honor Societies

THE STORY OF PI TAU SIGMA

Foreword

The Story of Pi Tau Sigma is placed in the hands of each member when initiated to set forth the objectives and create a closer bond of fellowship among those who are striving and achieving in the highest ideals of our profession.

The history and activities of each chapter are especially interesting to the members of each respective chapter and to everyone who recognizes the contribution which honor societies make toward to the coordination of education and cooperation between faculty and students preparing for a profession.

Occasionally in the individual histories are allusions to the motives for sacrifices of an individual member. In 70 years of harmonious development from two chapters to 153, our fraternity has enjoyed the cooperation of each member. Your chapter of Pi Tau Sigma is strong because each year the active members accepted their responsibility in selecting new members and in performing the duties of their generation.

This booklet may seem to be a disconnected story, but it was written by various chapters to impart to you some of the spirit of Pi Tau Sigma so that you will go on and do greater things than those accomplished in the past.

Selection of Members

The proper selection of members for Pi Tau Sigma is the determining factor in the fraternity's success and in its continued high rating. The following factors should be considered in order to insure the selection of worth members: Scholastic Standing, Faculty Rating, and Members' Opinions.

A good scholastic record is required to make a student eligible for Pi Tau Sigma but otherwise it may afford little help in determining fitness for membership. One must rank in the top 35 percent scholastically.

The opinion of faculty members is valuable because of their contact with prospective pledges and also because of their experience in judging and rating students. The list submitted to them should be alphabetical and contain no scholastic records. A list of qualities to be rated might include: leadership, personality, trustworthiness, industry, dependability, and probable future success in Mechanical Engineering.

Members personally acquainted with a candidate should give opinions on the candidate's fitness for membership and the likelihood of the candidate being a worthy member of Pi Tau Sigma. Some qualities on which members may rate candidates are: soundness of principles and morals, honesty, personal cleanliness and neatness, loyalty, and social adaptability.

For details for Membership refer to Article 3 of the Constitution of Pi Tau Sigma.

History of Pi Tau Sigma

With the twentieth century came the realization that honor societies made a definite contribution to the department and that membership required active participation. Pi Tau Sigma came into being on March 16, 1915, at the University of Illinois. A similar organization embarked November 15, 1915, at Wisconsin, and other local organizations (such as the Carzeuran of Purdue) were soon to become active.

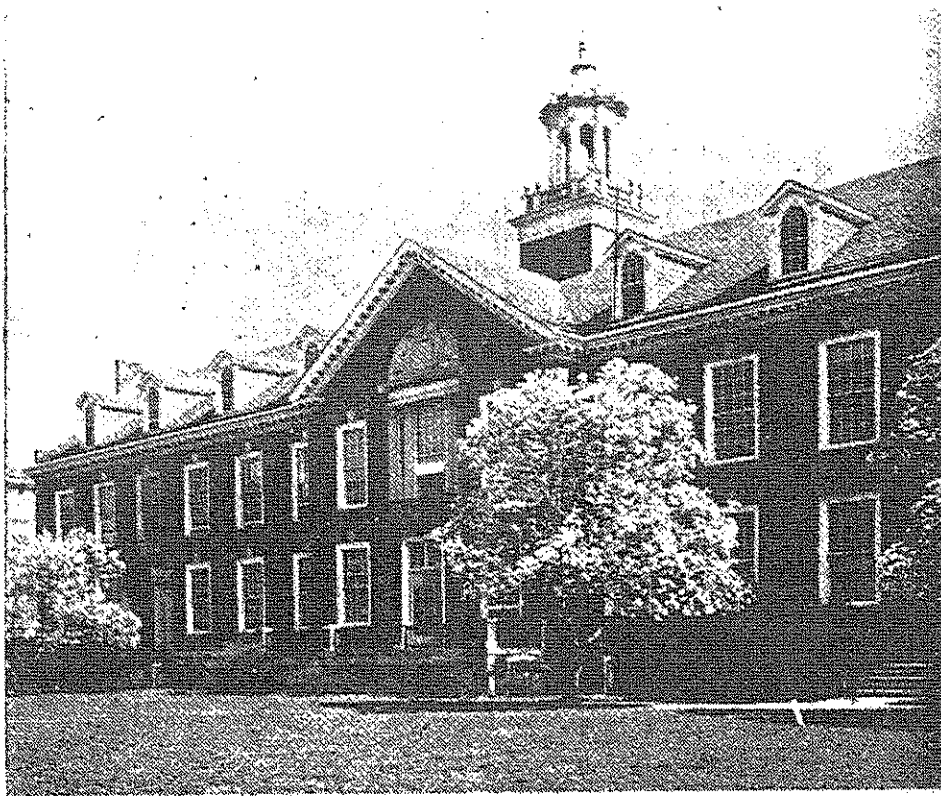
The early leaders: Professors C. R. Richards, A. C. Willard, and O. A. Leutwiler of the University of Illinois; G. L. Larson of the University of Wisconsin; G. A. Young of Purdue University; and J. V. Martenis of the University of Minnesota, stand out for their early contributions.

In ten years Pi Tau Sigma grew to six chapters in the middlewest (Illinois Alpha, Wisconsin Alpha, Purdue Beta, Minnesota Gamma, Illinois Delta, and Missouri Epsilon). In 1925 the expansion continued to the east with the Penn State Zeta Chapter being installed. Six years later the Texas Kappa Chapter, and the following year the Colorado Mu Chapter established chapters in the south and west. Also in 1932 the expansion continued southeast to Georgia Tech Nu Chapter. It was not until nine years later that the first chapter was installed on the Pacific coast (Oregon State Omega). In twenty-six years Pi Tau Sigma became truly a national honorary mechanical engineering fraternity with a total of twenty-five chapters. During the succeeding four years nine additional chapters were installed.

From 1947 to 1958 forty new chapters were installed. The Chapter-At-Large was established in 1954. The installations completed through the spring of 1993 bring the total established chapters to one hundred and fifty-three. Two chapters have become inactive, one due to the discontinuance of the mechanical engineering program. Earlier, two established chapters in New York merged into one. At this printing, 150 chapters remain active at different universities. A brief history of each chapter follows.

THE STORY OF PI TAU SIGMA

JOHNS HOPKINS TAU ALPHA



John Hopkins University
Baltimore, Maryland

The National Council of Pi Tau Sigma was petitioned in March 1949. The petition was granted, and the Johns Hopkins Tau Alpha Chapter was formally installed on March 23, 1949, by National President B. H. Jennings, with Professor J. R. Schietinger assisting.

The Johns Hopkins Tau Alpha Chapter continues to actively support the programs of the School of Engineering Science. In addition to such programs as sponsoring high academic achievement and expanding the Engineering Library, the chapter sponsors a banquet with an outstanding engineer as guest of honor and speaker.

Johns Hopkins Tau Alpha was reinstalled on May 15, 1992, after a period of inactivity. When the mechanical engineering program returned, Dr. W.N. Sharpe, Jr., immediately took steps to revitalize the Tau Alpha chapter.