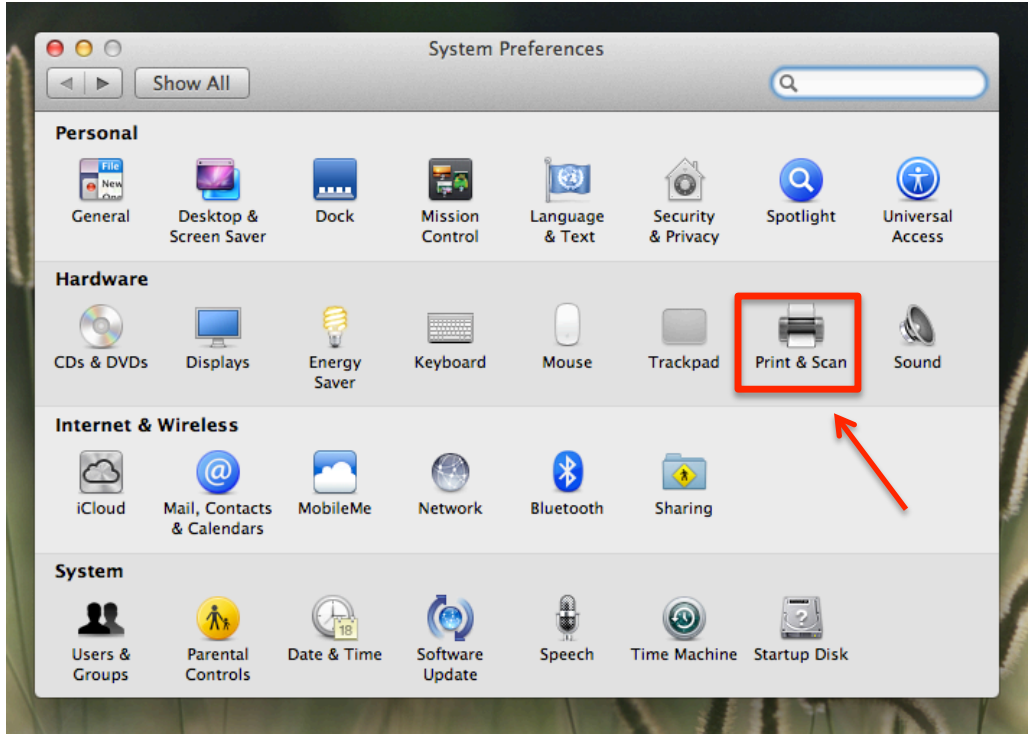



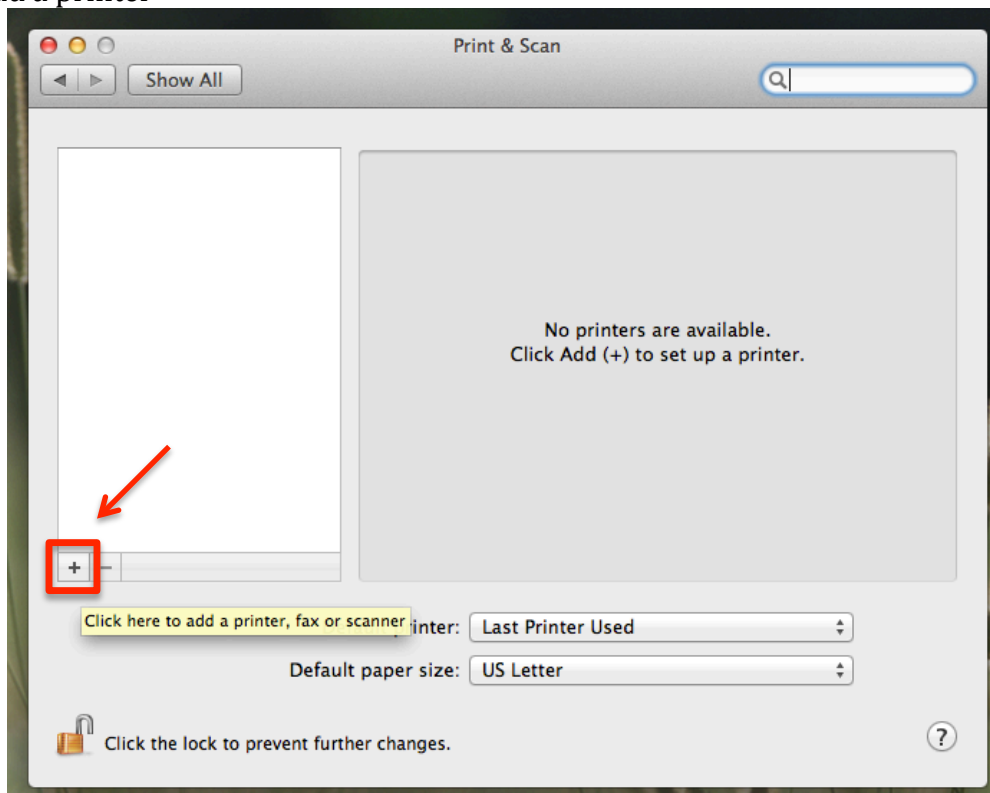
Instruction for Installing Printers for Mac OS X v.10.6 and above

For the **HP Laserjet** printer located on **3rd Floor Kitchen (Room 308)**

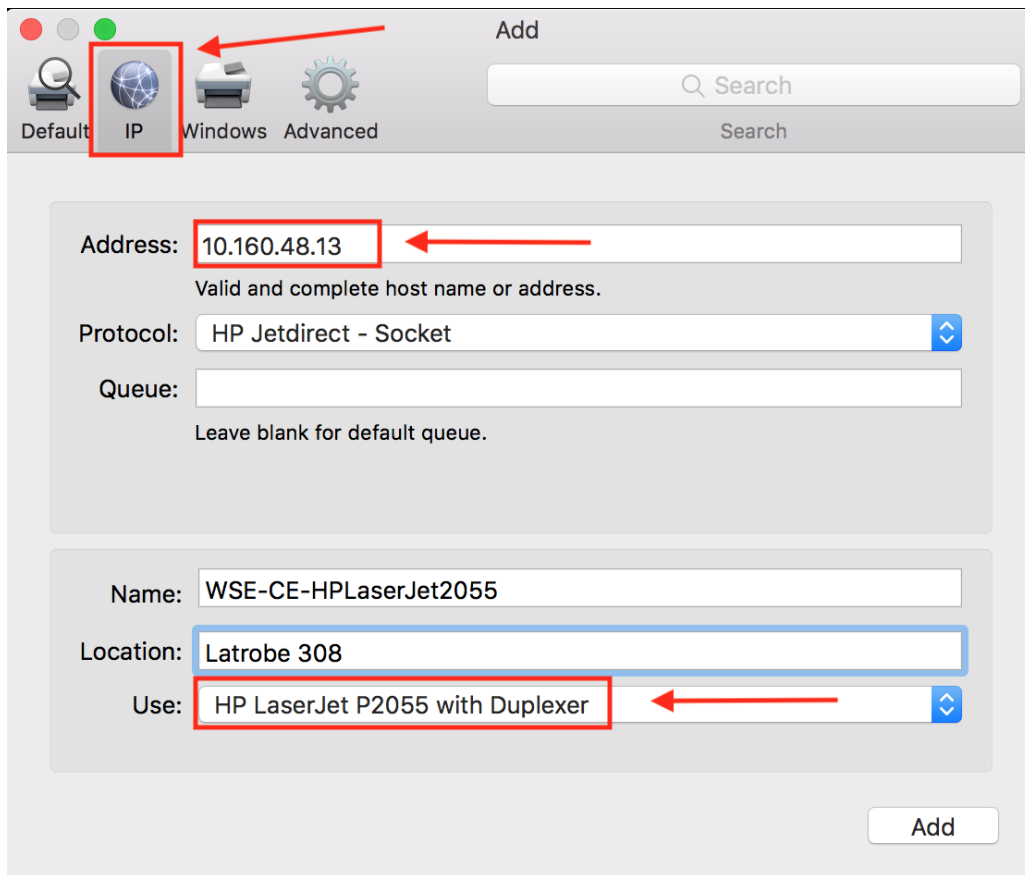
1. Open System Preference  and click on Print & Scan



2. Click  to add a printer



3. Click IP and enter the IP address 10.160.48.13. Mac should detect & download the appropriate driver.



4. Once you are done, you should see something similar to the picture below in your Print & Scan window

